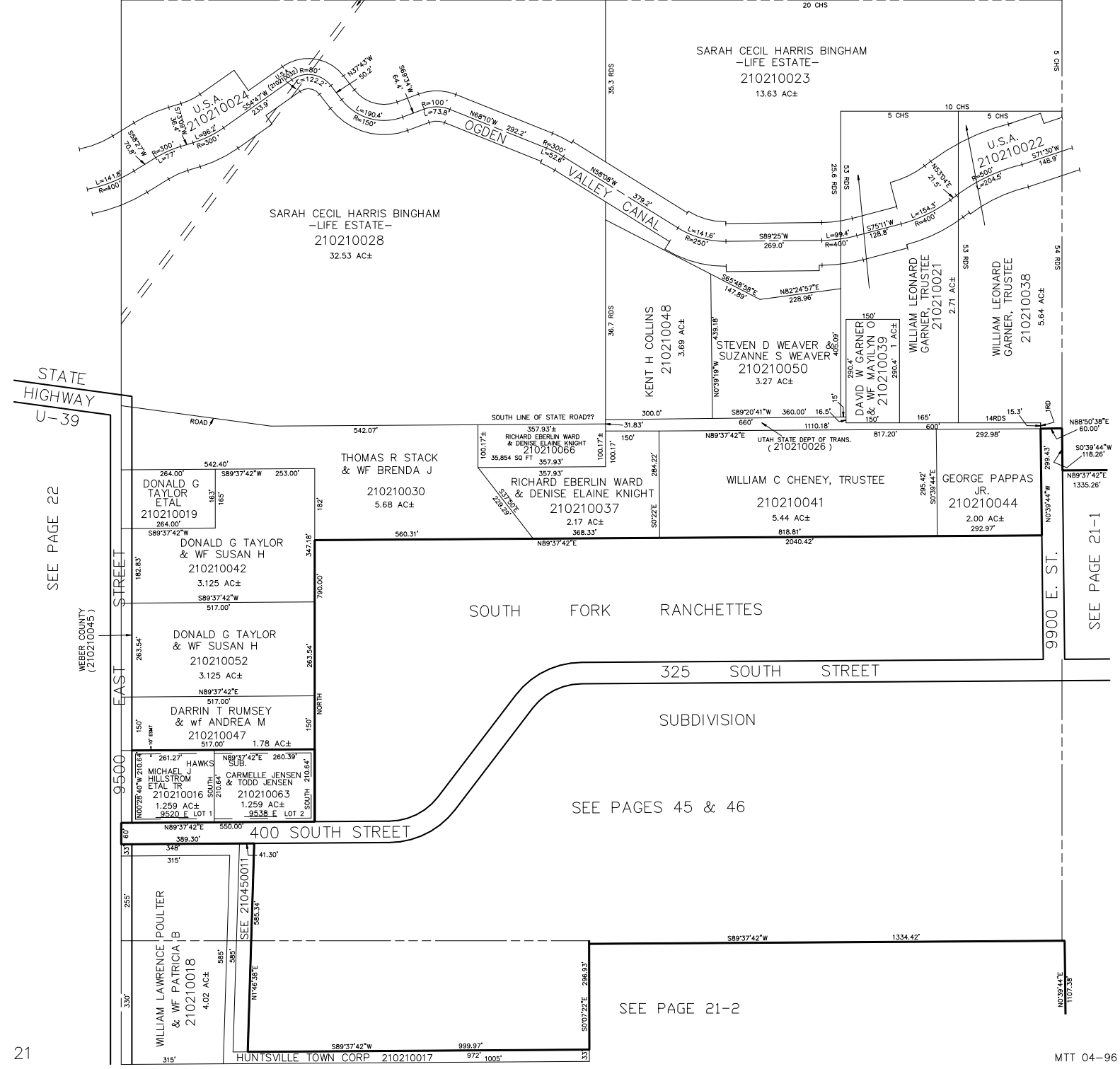


N.W. 1/4  
SECTION 15, T.6N., R.2E., S.L.B. & M.  
IN WEBER COUNTY  
SCALE 1" = 200'

TAXING UNIT: 318

MIDDLETON WATER  
WORKS ASSOC  
210210031

SEE PAGE 12



SEE PAGE 22

WEBER COUNTY  
(210210045)

9500 EAST STREET

WILLIAM LAWRENCE POULTER  
& Wf PATRICIA B  
210210018  
4.02 AC±

HUNTSVILLE TOWN CORP 210210017

SEE PAGES 45 & 46

SEE PAGE 21-2

SEE PAGE 21-1

MTT 04-96